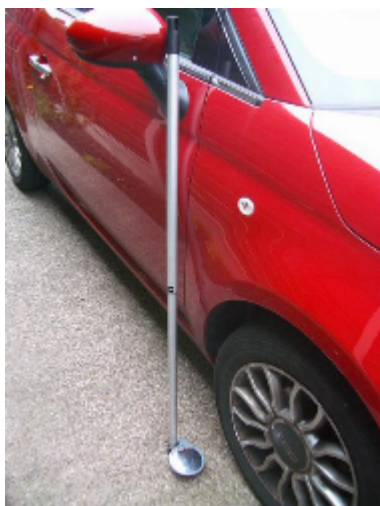


## Two part MOT mirror set including portable free standing and inspection mirrors



## MOT Bay ATL acrylic inspection mirror set

- Includes 400mm diameter free standing mirror and 100mm inspection mirror on telescopic handle
- Designed for use by lone testers in areas where a mirror cannot be fixed to the wall
- Height adjustable to suit most vehicle applications and folds flat for easy storage
- Shatter resistant acrylic face with high visibility protective vinyl edging
- Vacuum metallised coating – Gives the brightest sharpest reflection
- 100mm inspection mirror extends from 670mm to 1200mm

## Specification

SKU	M20240S
Diameter	400mm
Viewing Distance	10 metres