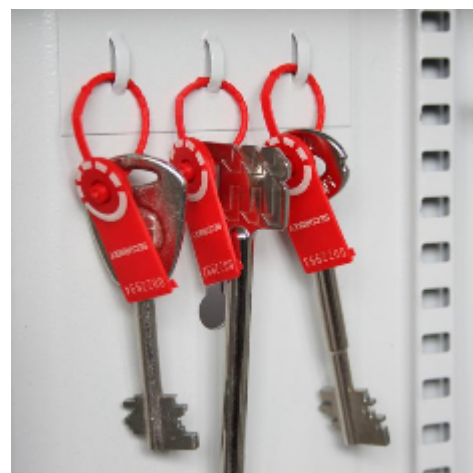


## Deep System Cabinets for 200 bunches



### System 200/D

- A key cabinet with increased depth – Ideal for storing bunches of keys
- Strongly made steel cabinet with flush closing rim to resist forced entry
- Adjustable colour coded and numbered hook bars allow the layout to be customised
- Ingenious key tabs are designed to hang so that the number is always visible
- Closed loops included for use with optional security seals
- Key locations can be recorded on the control index which is removable for added security
- Durable Light Grey paint finish will suit most environments
- Supplied with security lock and 2 keys

### Specification

<b>SKU</b>	KD200
<b>Weight</b>	18kg
<b>Standard</b>	Bronze
<b>Capacity</b>	200 bunches
<b>Locking Options</b>	3/4 Wheel Mechanical Combination, CL1000, La Gard 702 Electronic, Padlocking Cam Lock, Safe Logic