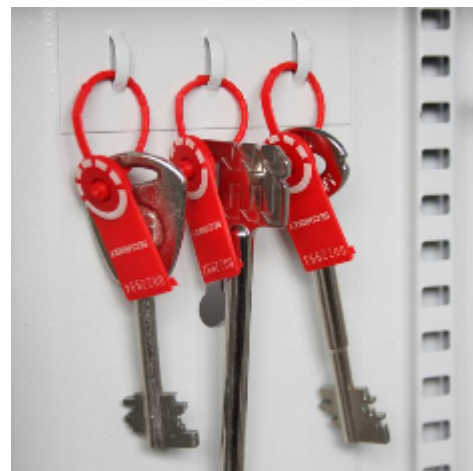


## Key Vault for 400 keys



## Key Vault 400

- Heavy duty key cabinet designed to meet the growing need for added security
- 2mm steel cabinet with flush closing door to resist forced entry
- Locking by security deadlock with 5-pin Euro profile cylinder & 2 keys
- Adjustable colour coded and numbered hook bars allow the layout to be customised
- Ingenious key tabs are designed to hang so that the number is always visible
- Closed loops included for use with optional security seals
- Key locations can be recorded on the control index which is removable for added security
- Use your own cylinder to incorporate the cabinet into an existing suited system
- Cylinder can be easily changed in seconds to ensure total security
- Durable Light Grey paint finish will suit most environments

## Specification

<b>SKU</b>	KV400
<b>Weight</b>	34kg
<b>Standard</b>	Silver
<b>Capacity</b>	400 keys
<b>Locking Options</b>	3/4 Wheel Mechanical Combination, La Gard 702 Electronic, Mechanical Push Button Lock, Safe Logic, Wittkopp Primor 2600