

4901 Instructions/Instructions/Instrucciones

For videos, instructions & FAQ's, visit:
 Pour des vidéos, directives et FAQ, visitez :
 Para ver videos, instrucciones y preguntas frecuentes, visite:
www.masterlock.com

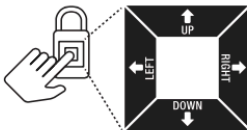
PRESET CODE
 CODE PRIMAIRE
 CÓDIGO PRINCIPAL

ACTIVATION CODE
 CODE D'ACTIVATION
 CÓDIGO DE ACTIVACIÓN

Remove from Package

QUICK START – UNLOCK WITH LOCK KEYPAD

1. Remove instructions from package.
2. Enter **PRESET CODE SHOWN ABOVE** by pressing the corresponding up, down, left, right directions on lock keypad. Do not pull on the shackle when entering code.
3. When lock lights green, open within 5 seconds or it will relock. Remove lock from packaging.



Fingerprint Setup

HOW TO SET PRIMARY USER FINGERPRINT

- The primary user is the owner of the lock and can store up to 2 fingerprints.
1. Begin with the padlock locked.
 2. Enter **PRESET CODE SHOWN ABOVE** by pressing the corresponding up, down, left, right directions on lock keypad. Do not pull on the shackle when entering code.
 3. Open the padlock.
 4. With padlock open, press and hold **UP** arrow until the blue LED light turns purple. Release **UP** arrow.
 5. Place finger on sensor and hold - LED light will change from blue to green. Lift finger.
 6. Repeat finger placement four more times.
 7. When fingerprint is registered the LED will flash green three times.
 8. Close padlock and test fingerprint. If red LED appears, fingerprint is not registered. Repeat setup process for a second fingerprint for Primary User.

Fingerprint Deletion

HOW TO REMOVE PRIMARY USER FINGERPRINTS

1. Begin with the padlock locked.
2. Enter **PRESET CODE** or open padlock with **PRIMARY FINGERPRINT**.
3. Open the padlock.
4. With padlock open, press and hold **UP** arrow until the blue LED light turns purple. Release **UP** arrow.
5. Press and hold **RIGHT** arrow until LED flashes green and red.
6. All primary fingerprints are now deleted.

Changing Preset Combination Code

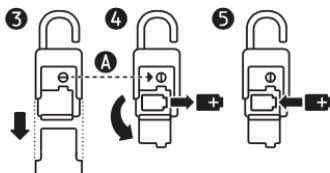
HOW TO CHANGE PRESET CODE

- New combination can be set using 4 to 6 up, down, left, right directional positions.
1. Begin with the padlock locked.
 2. Open padlock with **PRESET CODE** or **PRIMARY FINGERPRINT**.
 3. With padlock open, press and hold **UP** arrow until the blue LED light turns purple. Release **UP** arrow.
 4. Enter new combination using up, down, left, right directions on lock keypad.
NOTE: There is a 5 second pause before LED light flashes green two times.
 5. Re-enter combination. LED light will flash green three times.
 6. New combination is now set. Preset code is now deleted.
 7. Close padlock and test combination.

Model 4901 Battery Instructions

HOW TO REPLACE BATTERY

1. Lock will light yellow to indicate a low battery.
2. Unlock & open the lock.
3. Remove bottom cover.
4. Use a coin to turn battery door slot 90 degrees counterclockwise (A). Open battery door & remove old battery.
5. Install a new CR2 battery with positive (+) side facing right.
6. Close battery door, turn slot back 90 degrees clockwise & replace bottom cover.



LED KEYPAD INDICATORS

BLUE	GREEN	YELLOW	PURPLE	RED
Keypad Entry	Open or Unlocked	Low Battery	Programming Mode	Invalid Keypad Entry

HOW TO SET ADDITIONAL USER FINGERPRINTS

1. Begin with the padlock locked.
2. Enter **PRESET CODE** or open padlock with **PRIMARY FINGERPRINT**.
3. Open the padlock.
4. With padlock open, press and hold **DOWN** arrow until the blue LED light turns purple. Release **DOWN** arrow.
5. Place finger on sensor and hold - LED light will change from blue to green. Lift finger.
6. Repeat finger placement four more times.
7. When fingerprint is registered the LED will flash green three times
8. Close padlock and test fingerprint. If red LED appears, fingerprint is not registered. Repeat setup process with up to 8 total fingerprints.

HOW TO REMOVE ADDITIONAL USER FINGERPRINTS

1. Begin with the padlock locked.
2. Enter **PRESET CODE** or open padlock with **PRIMARY FINGERPRINT**.
3. Open the padlock.
4. With padlock open, press and hold **DOWN** arrow until the blue LED light turns purple. Release **DOWN** arrow.
5. Press and hold **RIGHT** arrow until LED flashes green and red.
6. ALL additional fingerprints are now deleted.

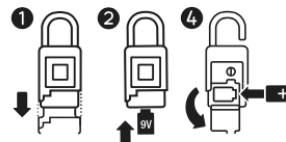
STORE YOUR COMBINATION CODE

1. Download the Master Lock Vault Home app to safely store your new combination.
2. Retrieve your padlock's unique Backup Master Code using your **ACTIVATION CODE SHOWN ABOVE**.



HOW TO UNLOCK WITH EXTERNAL BATTERY

1. If the battery dies in locked position, remove bottom cover.
2. Hold a 9V battery to jump contacts on bottom of lock.
3. While holding the battery in place, unlock padlock using Primary Fingerprint or Primary Code.
4. When unlocked, open battery door & install a new CR2 battery.

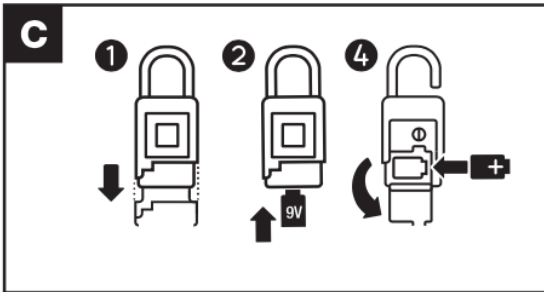
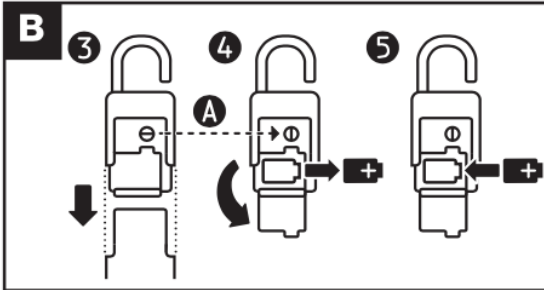
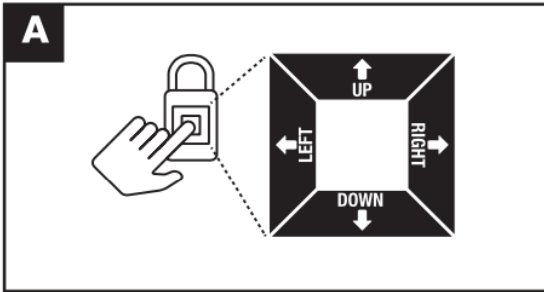


[A]

MASTER LOCK VAULT
PRODUCT CODE
CODE D'ACTIVATION
AKTIVIERUNGSCODE
ACTIVERINGSKODE
CÓDIGO DE ACTIVACIÓN
CODICE D'ATTIVAZIONE
CÓDIGO DE ACTIVAÇÃO

Master Lock

4901EURDLHCC



PRESET CODE
CODE PRIMAIRE
PRIMÄRCODE
FABRIEKSCODE
CÓDIGO DE ACTIVACIÓN
CODICE PRIMARIO
CÓDIGO PRIMÁRIO

GB - REMOVE FROM PACKAGE (A)

QUICK START - UNLOCK WITH LOCK KEYPAD

1. Remove instructions from package. 2. Enter PRESET CODE SHOWN BELOW by pressing the corresponding up, down, left, right directions on lock keypad. Do not pull on the shackle when entering code. 3. When lock lights green, open within 5 seconds or it will relock. Remove lock from packaging.

LED KEYPAD INDICATORS

BLUE	GREEN	YELLOW	PURPLE	RED
Keypad Entry	Open or Unlocked	Low Battery	Programming Mode	Invalid Keypad Entry

FINGERPRINT SETUP

HOW TO SET PRIMARY USER FINGERPRINT

The primary user is the owner of the lock and can store up to 2 fingerprints. 1. Begin with the padlock locked. 2. Enter PRESET CODE SHOWN BELOW by pressing the corresponding up, down, left, right directions on lock keypad. Do not pull on the shackle when entering code. 3. Open the padlock. 4. With padlock open, press and hold UP arrow until the blue LED light turns purple. Release UP arrow. 5. Place finger on sensor and hold - LED light will change from blue to green. Lift finger. 6. Repeat finger placement four more times. 7. When fingerprint is registered the LED will flash green three times. 8. Close padlock and test fingerprint. If red LED appears, fingerprint is not registered.

Repeat setup process for a second fingerprint for Primary User.

HOW TO SET ADDITIONAL USER FINGERPRINTS

1. Begin with the padlock locked. 2. Enter PRESET CODE or open padlock with PRIMARY FINGERPRINT. 3. Open the padlock. 4. With padlock open, press and hold DOWN arrow until the blue LED light turns purple. Release DOWN arrow. 5. Place finger on sensor and hold - LED light will change from blue to green. Lift finger. 6. Repeat finger placement four more times. 7. When fingerprint is registered the LED will flash green three times. 8. Close padlock and test fingerprint. If red LED appears, fingerprint is not registered.

Repeat setup process with up to 8 total fingerprints

FINGERPRINT DELETION

HOW TO REMOVE PRIMARY USER FINGERPRINTS

1. Begin with the padlock locked. 2. Enter PRESET CODE or open padlock with PRIMARY FINGERPRINT. 3. Open the padlock. 4. With padlock open, press and hold UP arrow until the blue LED light turns purple. Release UP arrow. 5. Press and hold RIGHT arrow until LED flashes green and red. 6. All primary fingerprints are now deleted.

HOW TO REMOVE ADDITIONAL USER FINGERPRINTS

1. Begin with the padlock locked. 2. Enter PRESET CODE or open padlock with PRIMARY FINGERPRINT. 3. Open the padlock. 4. With padlock open, press and hold DOWN arrow until the blue LED light turns purple. Release DOWN arrow. 5. Press and hold RIGHT arrow until LED flashes green and red. 6. ALL additional fingerprints are now deleted.

CHANGING PRESET COMBINATION CODE

HOW TO CHANGE PRESET CODE

1. Begin with the padlock locked. 2. Open padlock with PRESET CODE or PRIMARY FINGERPRINT. 3. With padlock open, press and hold UP arrow until the blue LED light turns purple. Release UP arrow. 4. Enter new combination using up, down, left, right directions on lock keypad. NOTE: There is a 5 second pause before LED light flashes green two times. 5. Re-enter combination. LED light will flash green three times. 6. New combination is now set. Preset code is now deleted. 7. Close padlock and test combination.

STORE YOUR COMBINATION CODE

1. Safely store your new combination on MASTERLOCK VAULT HOME app. 2. Retrieve your padlock's unique Backup Master Code using your MASTER LOCK VAULT PRODUCT CODE SHOWN ABOVE.

MODEL 4901 BATTERY INSTRUCTIONS

HOW TO REPLACE BATTERY (B)

1. Lock will light yellow to indicate a low battery. 2. Unlock & open the lock. 3. Remove bottom cover. 4. Use a coin to turn battery door slot 90 degrees counterclockwise (A). Open battery door & remove old battery. 5. Install a new CR2 battery with positive (+) side facing right. 6. Close battery door, turn slot back 90 degrees clockwise & replace bottom cover.

HOW TO UNLOCK WITH EXTERNAL BATTERY (C)

1. If the battery dies in locked position, remove bottom cover. 2. Hold a 9V battery to jump contacts on bottom of lock. 3. While holding the battery in place, unlock padlock using Primary Fingerprint or Primary Code. 4. When unlocked, open battery door & install a new CR2 battery.

[7]