

## KEY STORAGE

With secure key storage there is no need to place keys in an unprotected spot like under the door mat or plant pot.

### 5425D LIGHT UP DIAL KEY STORE BOX

- Light up dials / Backlit dials with glowing effect for ease of use in low light situations
- Suitable for a wide variety of applications including: Holiday homes and caravan parks
- Care Homes, domestic home care worker access
- Domestic use – spare key, after school access, neighbour access
- Caretaker and supervisor access in schools, hospitals and colleges
- Car park attendants, building sites
- Solid Zinc body to resist against hammering or sawing
- Concealed hinge and recessed internal compartment
- 4-digit programmable combination offering 10,000 possible codes
- Large 'open' lever for easy access
- Protective plastic door - Weather resistant – suitable for outdoor use
- CR2032 battery included – Approximately 2 years of battery life
- Supplied with 4 fixing screws
- Limited Lifetime Warranty

SKU: 5425D



ADDITIONAL INFORMATION

Weight	0.360 kg
Dimensions	120 (H) x 70 (W) x 46 (D) mm
Internal Height	106mm
Internal Width	60mm
Internal Depth	37mm

MASTER LOCK 5425EURD LIGHT UP DIAL KEY LOCK BOX - WALL MOUNT KEY SAFE IMAGES



5425EURD\_MAIN



Select Access Key Safe With Light Up Dials



Select Access Key Safe With Light Up Dials



Select Access Key Safe With Light Up Dials

MASTER LOCK 5425EURD LIGHT UP DIAL KEY LOCK BOX - WALL MOUNT KEY SAFE IMAGES



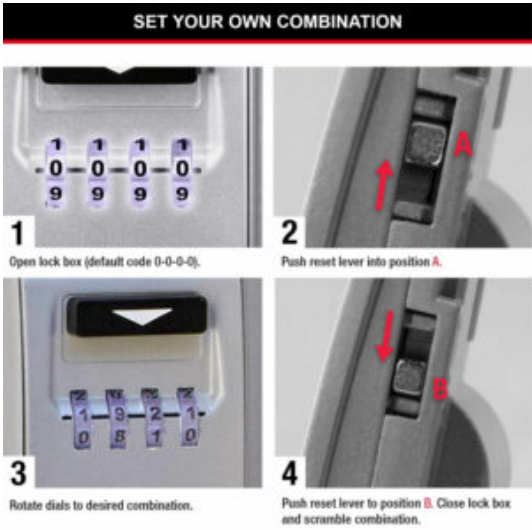
5425EURD\_DIMENSIONS



5425EURD\_SECUREDDDESIGN

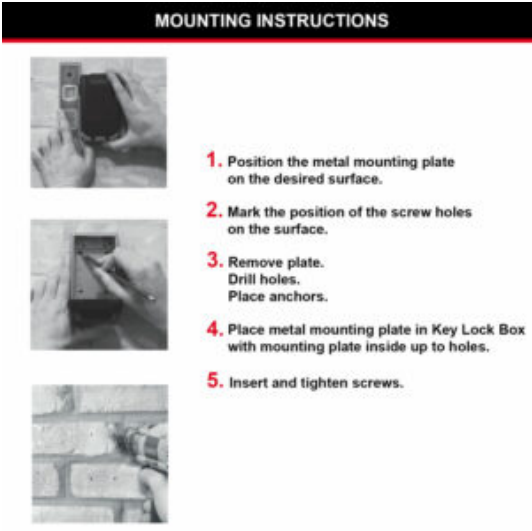


5425EURD\_APPLICATION



5425EURD\_COMBINATIONSETUP

MASTER LOCK 5425EURD LIGHT UP DIAL KEY LOCK BOX - WALL MOUNT KEY SAFE IMAGES



5425EURD\_MOUNTING\_INSTRUCTIONS



5425EURD\_YESNO



5425EURD\_OUTDOOR\_WALLMOUNTED

Your Securikey Stockist

Every effort has been made to ensure that the information in this brochure is correct. We have a policy of continually developing and improving our products and reserve the right to change specification without notice. By virtue of the Trades Description Act 1968 all measurements and weights must be considered approximate.



Generated 20/04/2024