

## EXCELL PADLOCKS

Excell Padlocks from Master Lock are able to use the toughest boron alloy material in conjunction with the latest cutting edge technology to create a truly high security padlock. These Excell Padlocks are 50% stronger than a standard padlock and ensure security of your most valuable items at an affordable price.

## EXCELL M1EURDLH

- Laminated steel core for higher strength
- Stainless steel and zinc outer sleeve for weather resistance
- Exclusive octagonal boron-carbide shackle for maximum cut resistance
- Double deadbolt locking for added protection from prying and hammering
- 4-pin cylinder
- Supplied with 4 keys
- For indoor and outdoor use
- Reinforced body bumper for scratch resistance
- Limited Lifetime Warranty

SKU: 1MEURDLH



ADDITIONAL INFORMATION

Weight	0.332 kg
Dimensions	45 (W) mm
Shackle Diameter	8mm
Horizontal Shackle Clearance	20mm
Vertical Shackle Clearance	51mm
Body Width	45mm

MASTER LOCK M1EURDLH EXCELL PADLOCK LONG SHACKLE IMAGES



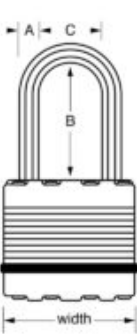
M1EURDLH




M1EURDLH 5



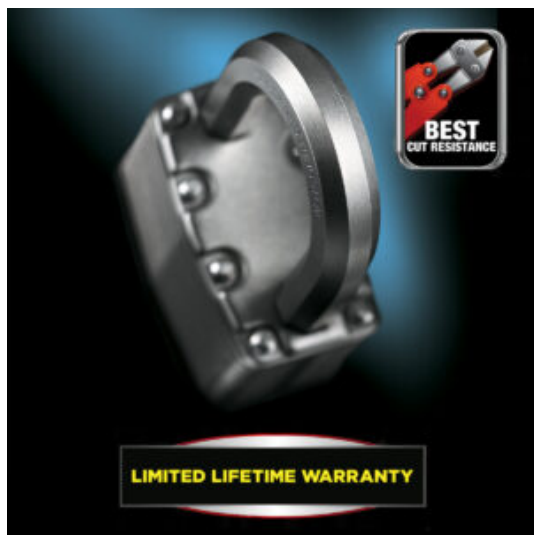
M1EURDLH 2



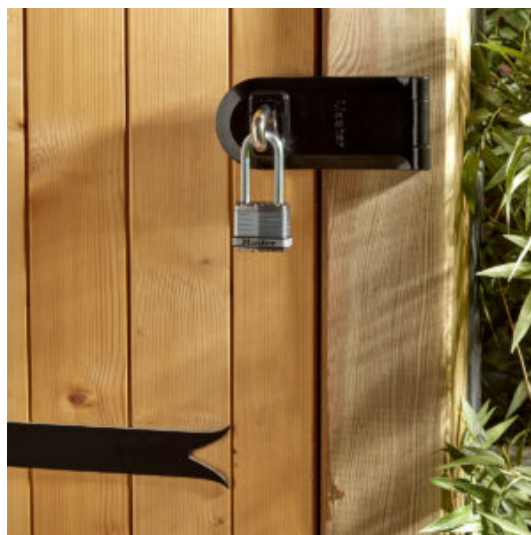
4 x   
DIMENSIONS  
(H x W x D)  
9.9 x 4.5 x 2.7 cm  
SHACKLE  
A : 0.8 cm  
B : 5.1 cm  
C : 2 cm

M1EURDLH 4

MASTER LOCK M1EURDLH EXCELL PADLOCK LONG SHACKLE IMAGES



M1EURDLH 3



M1EURDLH 1

Your Securikey Stockist

Every effort has been made to ensure that the information in this brochure is correct. We have a policy of continually developing and improving our products and reserve the right to change specification without notice. By virtue of the Trades Description Act 1968 all measurements and weights must be considered approximate.

