

STANDARD SYSTEM CABINETS

A good quality key cabinet does not need to be expensive. Our standard system cabinets are constructed from 1.5mm pressed and folded steel, provide the choice of five locking options, and have the flexibility to meet most domestic and commercial needs.

SYSTEM 200/D

- A key cabinet with increased depth - Ideal for storing bunches of keys
- Strongly made steel cabinet with flush closing rim to resist forced entry
- Adjustable colour coded and numbered hook bars allow the layout to be customised
- Ingenious key tabs are designed to hang so that the number is always visible
- Closed loops included for use with optional security seals
- Key locations can be recorded on the control index which is removable for added security
- Durable Light Grey paint finish will suit most environments
- Supplied with security lock and 2 keys



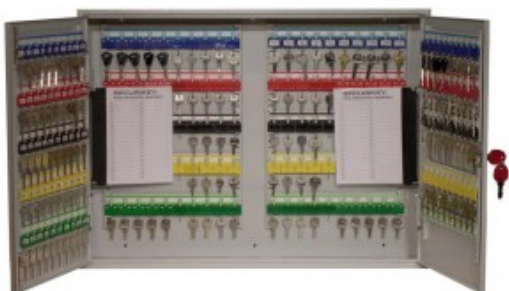
SKU: KD200



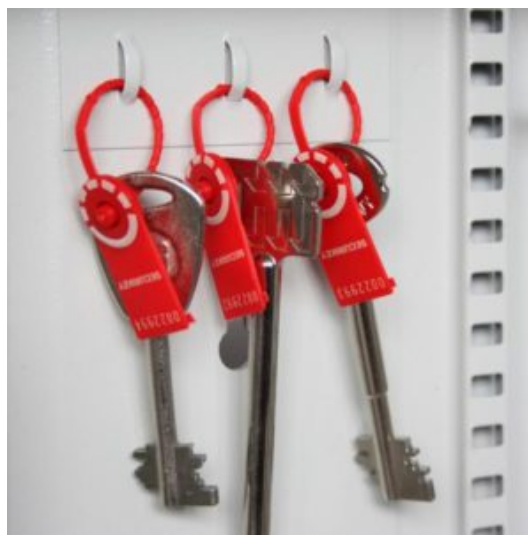
ADDITIONAL INFORMATION

Weight	18.000 kg
Dimensions	550 (H) x 730 (W) x 140 (D) mm
Standard	Bronze
Capacity	200 bunches
Locking Options	B – 3/4 Wheel Mechanical Combination, D – Padlocking Cam Lock, F – CL1000, I – La Gard 702, L – Safe Logic

DEEP SYSTEM CABINETS FOR 200 BUNCHES IMAGES



Deep System 200



Security Seals & Loops



Deep System 200 Electronic Cam Lock CL1000



Deep System 200 Dial Combination Lock

DEEP SYSTEM CABINETS FOR 200 BUNCHES IMAGES



Deep System 200 Electronic Lock REVO A

Your Securikey Stockist

Every effort has been made to ensure that the information in this brochure is correct. We have a policy of continually developing and improving our products and reserve the right to change specification without notice. By virtue of the Trades Description Act 1968 all measurements and weights must be considered approximate.

