

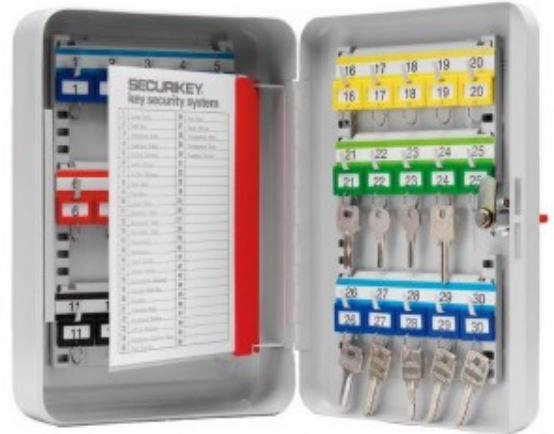
## STANDARD SYSTEM CABINETS

A good quality key cabinet does not need to be expensive. Our standard system cabinets are constructed from 1.5mm pressed and folded steel, provide the choice of five locking options, and have the flexibility to meet most domestic and commercial needs.

## SYSTEM 30

- 1.5mm steel cabinet with flush closing rim to resist forced entry
- Adjustable colour coded and numbered hook bars allow the layout to be customised
- Ingenious key tabs are designed to hang so that the number is always visible
- Closed loops included for use with optional security seals
- Durable Light Grey paint finish will suit most environments
- Supplied with security lock and 2 keys

SKU: KC030



ADDITIONAL INFORMATION

<b>Weight</b>	3.000 kg
<b>Dimensions</b>	305 (H) x 215 (W) x 80 (D) mm
<b>Standard</b>	Bronze
<b>Capacity</b>	30 keys
<b>Locking Options</b>	B - 3/4 Wheel Mechanical Combination, C - REVO A, D - Padlocking Cam Lock, F - CL1000, I - La Gard 39E, K - La Gard 66E, L - Safe Logic

SYSTEM CABINETS FOR 30 KEYS IMAGES



System 30



System 30 CL1000 Electronic Cam Lock

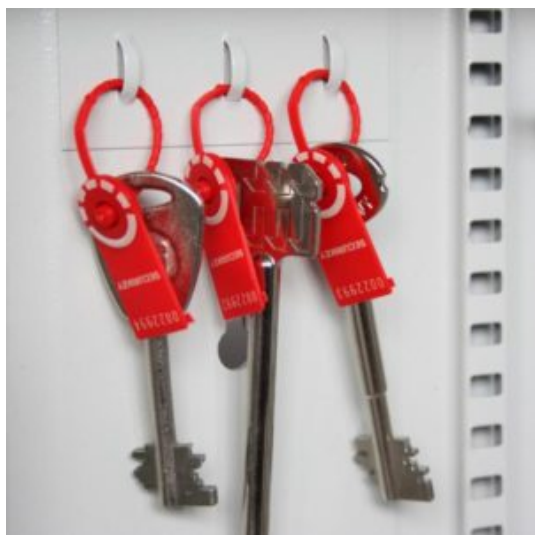


System 30 Electronic Lock REVO A



System 30 Dial Combination Lock

SYSTEM CABINETS FOR 30 KEYS IMAGES



Security Seals & Loops

Your Securikey Stockist

Every effort has been made to ensure that the information in this brochure is correct. We have a policy of continually developing and improving our products and reserve the right to change specification without notice. By virtue of the Trades Description Act 1968 all measurements and weights must be considered approximate.



Generated 12/08/2022