

CONVEX SAFETY MIRRORS

Our convex safety mirrors offer added safety and security by improving surveillance and eliminating blindspots. With their expert design they can be used in a diverse range of environments and situations to ensure protection.

RECTANGULAR ACRYLIC INTERIOR CONVEX MIRROR

- Rectangular model suitable for restricted height applications
- Prevents accidents and injuries, can also deter theft
- Shatter resistant acrylic face with a protective vinyl edging
- Vacuum metallised coating - Gives the brightest sharpest reflection
- 'J-arm' bracket mount included - allows adjustment to all angles
- Can be fixed to wall or ceiling
- Suitable for internal use only
- Widely used in shops, factories, warehouses, hospitals etc...

SKU: M18330A



ADDITIONAL INFORMATION

Weight	2.570 kg
Dimensions	600 (H) x 400 (W) mm

RECTANGULAR ACRYLIC INTERIOR CONVEX MIRROR IMAGES



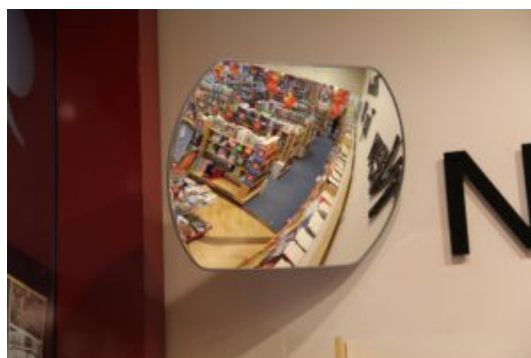
600x400mm Acrylic Interior Mirror



600x400mm Acrylic Interior Mirror

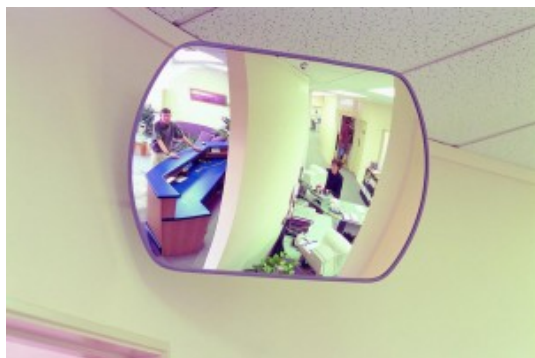


600x400mm Acrylic Interior Mirror



600x400mm Acrylic Interior Mirror

RECTANGULAR ACRYLIC INTERIOR CONVEX MIRROR IMAGES



600x400mm Acrylic Interior Mirror



600x400mm Acrylic Interior Mirror

Your Securikey Stockist

Every effort has been made to ensure that the information in this brochure is correct. We have a policy of continually developing and improving our products and reserve the right to change specification without notice. By virtue of the Trades Description Act 1968 all measurements and weights must be considered approximate.



Generated 25/04/2024