

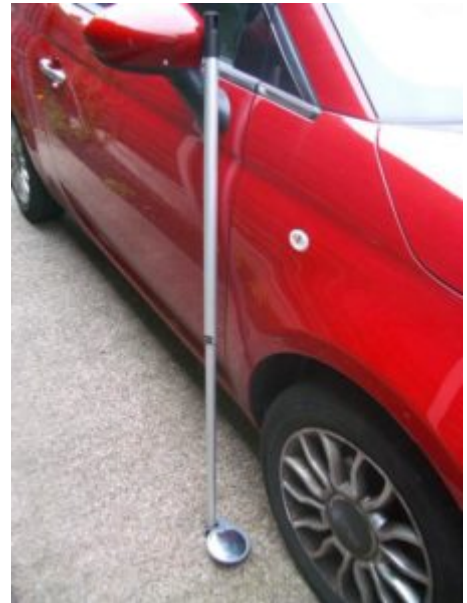
### PORTABLE INSPECTION MIRRORS

Portable Inspection Mirrors are the primary tool for under-vehicle searches to detect concealed explosives, weapons or drugs.

### MOT BAY ATL ACRYLIC INSPECTION MIRROR SET

- Includes 400mm diameter free standing mirror and 100mm inspection mirror on telescopic handle
- Designed for use by lone testers in areas where a mirror cannot be fixed to the wall
- Height adjustable to suit most vehicle applications and folds flat for easy storage
- Shatter resistant acrylic face with high visibility protective vinyl edging
- Vacuum metallised coating - Gives the brightest sharpest reflection
- 100mm inspection mirror extends from 670mm to 1200mm

SKU: M20240S



ADDITIONAL INFORMATION

Weight	0.000 kg
Dimensions	
Diameter	400mm
Viewing Distance	10 metres

TWO PART MOT MIRROR SET  
INCLUDING PORTABLE FREE STANDING  
AND INSPECTION MIRRORS



TWO PART MOT MIRROR SET INCLUDING PORTABLE FREE STANDING  
AND INSPECTION MIRRORS IMAGES



MOT Inspection Mirror Set

TWO PART MOT MIRROR SET  
INCLUDING PORTABLE FREE STANDING  
AND INSPECTION MIRRORS



Your Securikey Stockist

Every effort has been made to ensure that the information in this brochure is correct. We have a policy of continually developing and improving our products and reserve the right to change specification without notice. By virtue of the Trades Description Act 1968 all measurements and weights must be considered approximate.



Generated 19/04/2024

