

CONVEX SAFETY MIRRORS

Our convex safety mirrors offer added safety and security by improving surveillance and eliminating blindspots. With their expert design they can be used in a diverse range of environments and situations to ensure protection.

FLAT STAINLESS STEEL VANITY MIRROR - ANTI-LIGATURE 400 X 300MM

- Tamperproof powder coated steel frame
- 1mm shatterproof stainless steel face
- Mirror is totally encapsulated for added security
- 6 x 7mm diameter fixing holes
- Supplied with Torx® Security Screws
- Frame colour - Ghost Grey

SKU: M16258GS



ADDITIONAL INFORMATION

Weight	2.4 kg
Dimensions	400 (H) x 300 (W) x 5 (D) mm

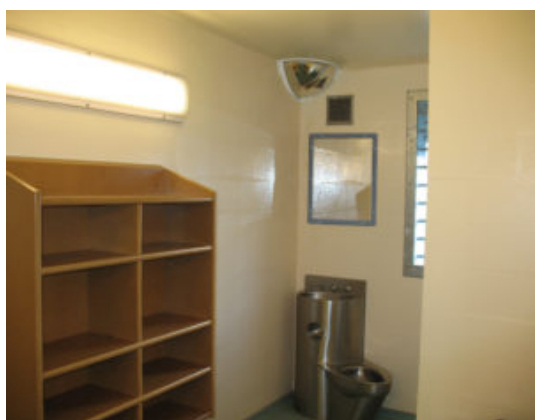
FLAT STAINLESS STEEL VANITY MIRROR - ANTI-LIGATURE 400 X 300MM IMAGES



SBD Police Security Initiative



Vanity Mirror Fixing Screw



M16257GS_05



Flat Anti-Ligature Vanity Mirror

FLAT STAINLESS STEEL VANITY MIRROR -
ANTI-LIGATURE 400 X 300MM



Your Securikey Stockist

Every effort has been made to ensure that the information in this brochure is correct. We have a policy of continually developing and improving our products and reserve the right to change specification without notice. By virtue of the Trades Description Act 1968 all measurements and weights must be considered approximate.



Generated 20/04/2024

