

### CONVEX SAFETY MIRRORS

Our convex safety mirrors offer added safety and security by improving surveillance and eliminating blindspots. With their expert design they can be used in a diverse range of environments and situations to ensure protection.

### FLAT STAINLESS STEEL VANITY MIRROR - ANTI-LIGATURE 600 X 500MM

- Tamperproof powder coated steel frame
- 1mm shatterproof stainless steel face
- Mirror is totally encapsulated for added security
- 8 x 7mm diameter fixing holes
- Supplied with Torx® Security Screws
- Frame colour - Ghost Grey

SKU: M16259GS



ADDITIONAL INFORMATION

<b>Weight</b>	5.5 kg
<b>Dimensions</b>	600 (H) x 500 (W) x 5 (D) mm

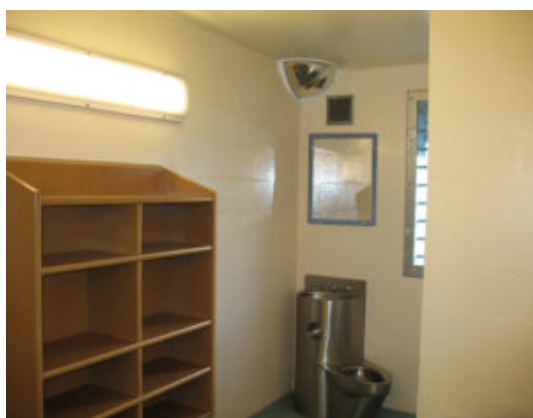
FLAT STAINLESS STEEL VANITY MIRROR - ANTI-LIGATURE 600 X 500MM IMAGES



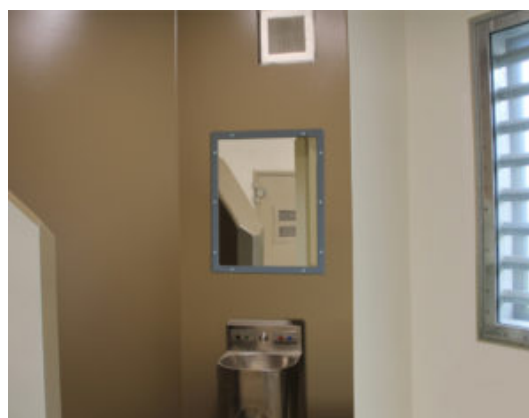
SBD Police Security Initiative



Vanity Mirror Fixing Screw



M16257GS\_05



M16257GS\_04

FLAT STAINLESS STEEL VANITY MIRROR - ANTI-LIGATURE 600 X 500MM IMAGES



M16257GS\_02

FLAT STAINLESS STEEL VANITY MIRROR -  
ANTI-LIGATURE 600 X 500MM



Your Securikey Stockist

Every effort has been made to ensure that the information in this brochure is correct. We have a policy of continually developing and improving our products and reserve the right to change specification without notice. By virtue of the Trades Description Act 1968 all measurements and weights must be considered approximate.



Generated 19/04/2024

