

KEY REELS, RETRACTORS & CASES

A reliable, convenient and safe answer for keeping keys, ID cards and tools safe and secure, but still within reach.

TOOLMATE TAPE MEASURE JACKET

- Prevents accidents and injuries caused by dropped tape measure
- The most advanced tape measure tool tethering solution on the market
- Manufactured from tough Polyester
- Quickly attaches to the most commonly used tape measures
- Can be used with 'switch locking' or 'squeeze type' measures
- **ANSI 121-2018 Certified** and dynamically drop tested by a 3rd party. Patent Pending
- Note - Measure not included

SKU: RTM-LTMJ



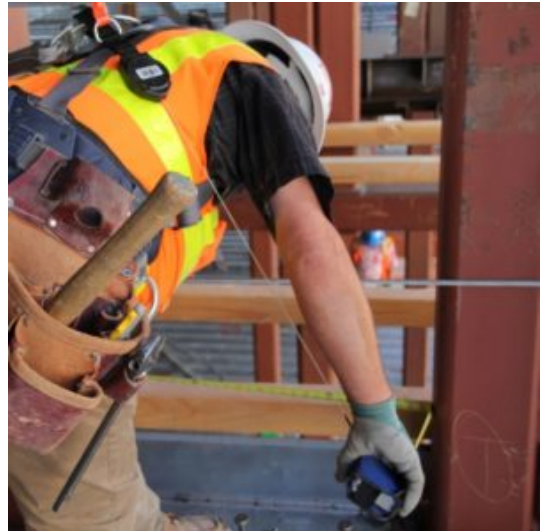
ADDITIONAL INFORMATION

Weight	0.036 kg
Dimensions	15 (H) x 140 (W) x 100 (D) mm

TOOLMATE TAPE MEASURE JACKET IMAGES



Toolmate Tape Measure Jacket



Toolmate Tape Measure Jacket



Toolmate Tape Measure Jacket

Your Securikey Stockist

Every effort has been made to ensure that the information in this brochure is correct. We have a policy of continually developing and improving our products and reserve the right to change specification without notice. By virtue of the Trades Description Act 1968 all measurements and weights must be considered approximate.

